



515 N. Main Street | Hinesville, GA 31313
PO Box 649 | Hinesville, GA 31310
912.368.5212
www.mesack.com
ME Sack Engineering
@mesackengineering
mesack

ADDENDUM No. THREE

Date: March 30, 2026
Project: Flemington 2025 LMIG, MES No. 2025-10
Engineer: M.E. Sack Engineering CH
Hinesville, Georgia

The original plans, specifications, and bid documents are amended to include the following:

Bid Form:

- Replace the previous Bid Form (pg. 7) with the enclosed of the same. Note that an alternative to bid item #28 was added.

Specifications:

- Replace the previous Section 01150 with the enclosed of the same. Note that language was added to include concrete base to paragraph 2.05 Pavement Removal and Replacement.

Plans:

- Replace the plan set with the enclosed of the same. Note that revisions were made to reflect the appropriate quantities and dimensions for patches on E. Cobblestone Lane. The title block was also updated.

We offer the following clarifications for questions received:

- 1) *For E. Cobblestone Lane, the bid schedule indicates 5 SY to be removed and replaced, however the plans appear to show two areas totaling 11 SY. Please confirm the correct quantity.*
 - The notes on plan sheet C5 have been updated to reflect the proper quantities and dimensions of the patches. Five (5) SY is the correct area, and the asphalt surface course was increased to 0.4 tons to cover additional area one (1) foot beyond the potholes.

2) *Due to the limited size of these areas, achieving proper compaction may be difficult. Would the use of 5000 PSI high early concrete with a 2" overlay be acceptable?*

- The engineer will agree to a 5,000 PSI concrete base layer with a 5" thickness, provided the contractor maintains the 3 foot excavation depth, and backfills with the appropriate amount of suitable material to ensure the surface course asphalt will match existing grades and elevations. Please maintain the 1.5" 9.5mm Superpave surface layer.

3) *Please confirm whether the bid date of April 2nd will remain unchanged.*

- The April 2nd bid opening date is firm and will not change, given the already-revised original date and expected project timelines. Please do not hesitate to contact our office with questions, and submit bids with the best estimates possible.

-END-



B. BID FORM continued

Bid Item	Quantity	Units	Description	Unit Price	Cost
D. Old Hines Road					
20	296	SY	Remove Asphalt, Base, & Subgrade - 3' Depth	\$	\$
21	296	SY	Replace Subgrade with Compacted Suitable Material - 2' + Depth	\$	\$
22	66	CY	8" Compacted Granular Base	\$	\$
23	25	TN	1.5" 9.5mm SuperPave Asphalt Surface Course	\$	\$
24	1	LS	Traffic Control	-	\$
25	1	LS	Mobilization (5% Max)	-	\$
SUBTOTAL					\$
E. Cobble Stone Lane					
26	5	SY	Remove Asphalt, Base, & Subgrade - 3' Depth	\$	\$
27	5	SY	Replace Subgrade with Compacted Suitable Material - 2' + Depth	\$	\$
28	1	CY	8" Compacted Granular Base	\$	\$
29	0.25	TN	1.5" 9.5mm SuperPave Asphalt Surface Course	\$	\$
30	1	LS	Traffic Control	-	\$
31	1	LS	Mobilization (5% Max)	-	\$
Alternate					
28.A	0.65	CY	5,000 PSI High Early Concrete Base – 5" Depth	\$	\$
SUBTOTAL					\$
F. Old Savannah Road					
32	297	SY	Remove Asphalt, Base, & Subgrade - 3' Depth	\$	\$
33	297	SY	Replace Subgrade with Compacted Suitable Material - 2' + Depth	\$	\$
34	66	CY	8" Compacted Granular Base	\$	\$
35	25	TN	1.5" 9.5mm SuperPave Asphalt Surface Course	\$	\$
36	1	LS	Traffic Control	-	\$
37	1	LS	Mobilization (5% Max)	-	\$
SUBTOTAL					\$

**SECTION 01150
MEASUREMENT AND PAYMENT**

PART 1 - GENERAL

1.01 QUANTITIES

- A. Quantities: Quantities listed in the Proposal are approximate only and are intended to serve as a guide in comparing bids, and may be increased or decreased without invalidating the unit price bid.
- B. Payment: Contractor shall be paid for actual in place quantities as determined by the Engineer field measurements.
- C. Discrepancies: In case of discrepancies between the figures shown in the unit prices and totals, the unit prices shall apply and the totals shall be corrected to agree with the unit price.

PART 2 - MEASUREMENT AND PAYMENT

2.01 DEMOLITION

- A. Measurement: Measurement shall be made on the basis of the percentage completed item in accordance with the plans, specifications and bid documents.
- B. Payment will be made on the basis of the completed item of work. The lump sum price shall include furnishing all labor, materials and equipment necessary to complete this item of work. Work shall include, but is not limited to, removal of any storm pipe, drainage structures, rip rap, or other material that exist and will not be used as part of this project, excavation, disposal at an approved site, backfill, compaction and surface restoration.

2.02 DRAINAGE STRUCTURE (Catch Basins, Yard Drain, Junction Box, Headwall, Concrete Flumes, Flared End Section, Pipe End Treatments, Interference Box, Outlet Structures)

- A. Measurement: Measurement will be made on the basis of each drainage structure installed at the elevation and location designated on the construction plans.
- B. Payment: Payment will be made on the basis of each structure installed at the unit price bid. The unit price bid shall include furnishing all labor, materials and necessary equipment to complete the item of work. Work shall include, but not be limited to, excavation, necessary shoring and sheeting, dewatering, forming, form wrecking, foundations as required, furnishing and installing the structure, placement of grates, manhole rings and covers as applicable, grouting around pipe, 6" stub for future underdrain connection, backfill, compaction, grading, complete surface restoration and cleanup.

2.03 CURB AND GUTTER

- A. Measurement: Measurement will be made on the basis of each linear foot of curb and gutter installed to the lines and grades shown on the plan. The size of the curb and gutter will be shown on the plans and indicated on the bid documents.

- B. Payment: Payment will be made on the basis of the unit price stated in the bid. The price shall include all materials, labor and equipment necessary to complete the installation. Work shall include, but is not limited to, all excavation, forming, grade staking, compaction, curb and gutter installation, dewatering, form wrecking, cleanup and surface restoration.

2.04 SIDEWALK

- A. Measurement: Measurement shall be made on the basis of the number of square yards of sidewalk at the specified thickness and dimension as shown on the construction plans. Irregular areas such as turnouts, filler strips and intersections will be measured to the closest square yard. Prior to installation of the sidewalk all areas will be checked for compaction.
- B. Payment: Payment will be made on the basis of the number of square yards of sidewalk installed at the unit price stated in the bid. The price shall include all labor, equipment and material to complete the task. Work shall include, but not be limited to, grading, compaction, construction joints, expansion joints, fiber mesh or wire reinforcing, accommodation for sidewalk pavers, furnishing, hauling, placing and compaction of the concrete in order to bring the sidewalk to the lines, grades, and cross sections shown on the construction plans, form wrecking, final cleanup and surface restoration.

2.05 PAVEMENT REMOVAL AND REPLACEMENT

- A. Measurement: Measurement shall be made on the basis of each square yard of pavement, base, and subgrade removed, each cubic yard of granular base or concrete base installed, and each ton of asphalt poured, in accordance with the plans and Contract Documents based on the length, width, and depth of the pavement restored
- B. Payment: Payment will be made on the basis of the unit price stated in the bid. the work shall include, but is not limited to:
 - 1. Marking, cutting, and removal of pavement, base, and subgrade material as necessary.
 - 2. Trench maintenance and crusher run stone or concrete base as required to maintain level traffic surface during construction period and compaction of trench.
 - 3. Finish and install asphalt patch in accordance with City of Flemington Standard Specifications if on city street or in accordance with plans.
 - 4. Complete surface restoration and cleanup

2.06 ASPHALT MILLING

- A. Measurement: Measurement will be made on the basis of the number of square yards of asphalt milling completed as described in this section and/or in accordance with the approved construction plans. Irregular areas such as turnouts, filler strips, and intersection will be measured to the closest square yard. All areas to be approved by the Engineer prior to milling.

- B. Payment: Payment will be made on the basis of the number of square yards of asphalt milling completed at the unit price stated in the bid. The price shall include all labor, equipment, and material necessary to complete the work. Work shall include, but is not limited to, milling, removal and disposal of milling refuse, traffic control, surface cleanup and restoration. All streets milled shall be resurfaced with asphalt topping within 48 hours of milling.

2.07 ASPHALT PAVING

- A. Measurement: Measurement will be made on the basis of each ton of asphalt in place, in accordance with the construction plans and accepted by the Engineer. Actual weight will be determined by weighing on a certified motor truck scale and presenting a notarized copy of the recorded weight to the Engineer.
- B. Payment: Payment will be made on the basis of the number of tons of asphalt in place in accordance with the unit price bid as stated in the contract. Work shall include, but is not limited to, the furnishing, hauling, placing and compaction of the asphalt in order to bring the pavement to the lines, grades and cross sections as designated on the construction plans and as determined by the Engineer. The unit price bid shall also include surface cleaning, prime, tack and pavement and handicap striping. All striping will be in accordance with MUTCD and local specifications.

2.08 PAVEMENT MARKING

- A. Measurement: Measurement shall be made on each linear foot of striping as shown on the plans.
- B. Payment shall be made at the unit price stated in the bid. The price bid shall include all labor, materials, and equipment necessary to complete the task. The task shall include, but is not limited to, supplying, and installing all thermoplastic pavement markings to replace existing in accordance with construction plans, surface restoration and cleanup.

2.09 ADJUSTING TO GRADE OF MISCELLANEOUS ROADWAY STRUCTURES

- A. Measurement: Measurement will be made on the basis of adjusting each structure to grade, to determine the unit or units of each type completed and accepted, in accordance with the plans and specifications and accepted by the engineer. Structure tops to be raised or lowered 2 ft. (600 mm) or less are considered "Adjust to Grade."
- B. Payment will be made on the basis of each structure adjusted to grade. The unit price bid shall include all labor, materials and equipment necessary, including, but not limited to, excavation, shoring and sheeting, dewatering, gravel bedding, castings, backfill, compaction and complete surface restoration. Payment is full compensation for adjusting to grade the structures as specified in this Specification.

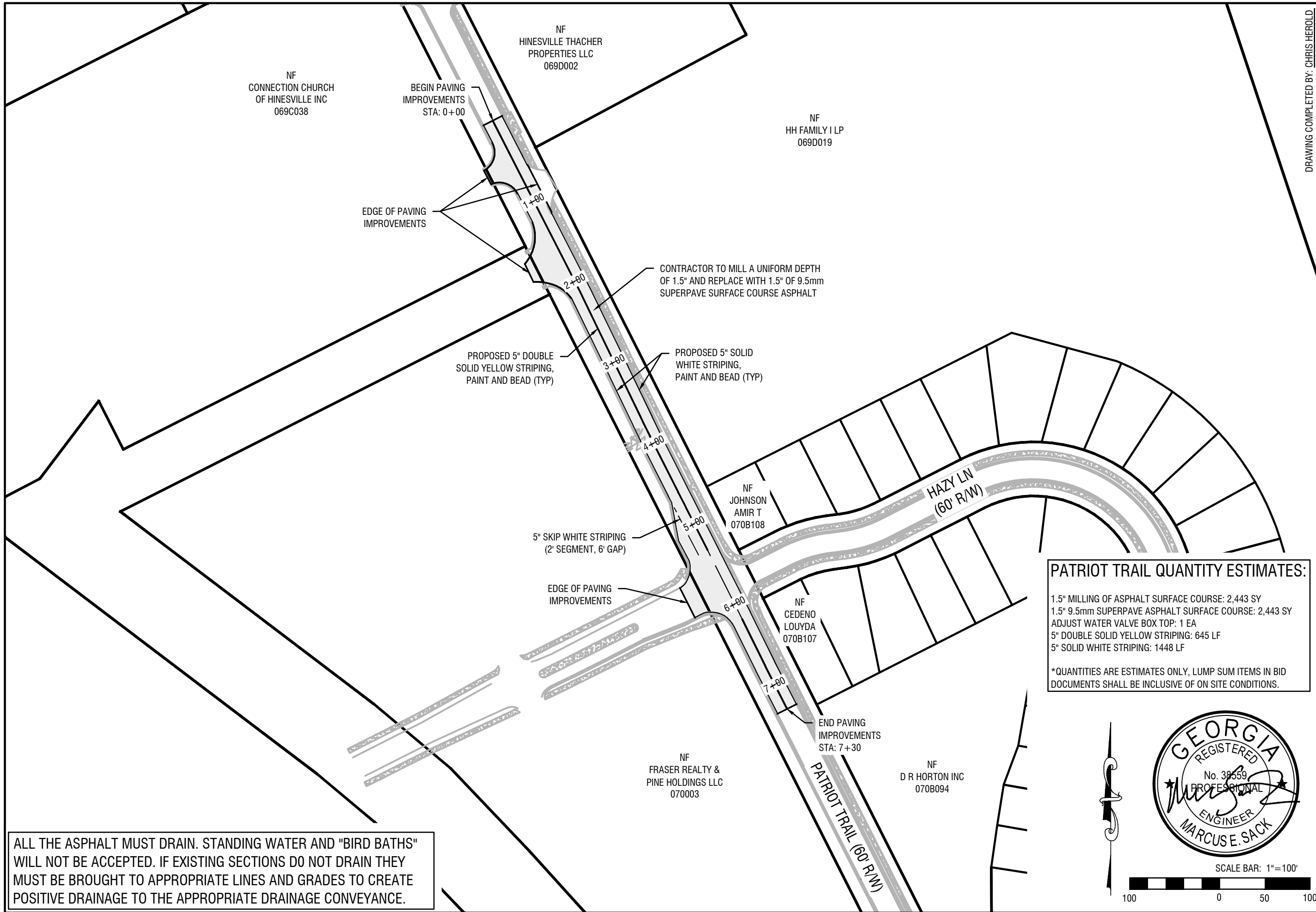
2.10 TRAFFIC CONTROL

- A. Measurement: Measurement shall be made on the basis of the percentage complete of the lump sum bid in accordance with the construction plans and bid items.
- B. Payment: Payment shall be made on the basis of the percentage complete of the lump sum price stated in the bid as determined by the project engineer. The lump sum shall include furnishing all labor, materials, and equipment necessary to complete the task. The task shall include, but is not limited to, the placing, moving, and maintenance of all signage, barricades, cones, barrels, flagging, flag men, and guide vehicles throughout the construction process to safely reroute traffic from existing traffic patterns. Traffic control shall be done in a manner to safely warn, reroute, and lead vehicles to their destination. Additional signage will be required if the engineer deems that the traffic control in place does not fully meet the required intent of the task. Changing of existing traffic patterns shall be communicated with the engineer no less than 48 hours prior to.

2.11 MOBILIZATION

- A. Payment will be made for the price as stated in the Contract once the Contractor has established his construction yard, and met the requirements established in the Contract Documents. Mobilization will be recognized complete once the Contractor has provided a construction schedule and moved his equipment and a substantial amount of material to the job site. Construction must be underway and progressing. Payment for mobilization will be limited to a maximum amount not to exceed 5% of the bid price.

END OF SECTION



ALL THE ASPHALT MUST DRAIN. STANDING WATER AND "BIRD BATHS" WILL NOT BE ACCEPTED. IF EXISTING SECTIONS DO NOT DRAIN THEY MUST BE BROUGHT TO APPROPRIATE LINES AND GRADES TO CREATE POSITIVE DRAINAGE TO THE APPROPRIATE DRAINAGE CONVEYANCE.

PATRIOT TRAIL QUANTITY ESTIMATES:
 1.5" MILLING OF ASPHALT SURFACE COURSE: 2,443 SY
 1.5" 9.5mm SUPERPAVE ASPHALT SURFACE COURSE: 2,443 SY
 ADJUST WATER VALVE BOX TOP: 1 EA
 5" DOUBLE SOLID YELLOW STRIPING: 645 LF
 5" SOLID WHITE STRIPING: 1448 LF
 *QUANTITIES ARE ESTIMATES ONLY, LUMP SUM ITEMS IN BID DOCUMENTS SHALL BE INCLUSIVE OF ON SITE CONDITIONS.

GEORGIA REGISTERED ENGINEER
 No. 38559
 MARCUS E. SACK

SCALE BAR: 1"=100'

DRAWING COMPLETED BY: CHRIS HEROLD

REVISIONS:
 ADDENDUM 2
 ADDENDUM 3

THIS DRAWING IS AN INSTRUMENT OF SERVICE AND REMAINS THE PROPERTY OF P.C. SIMONTON & ASSOCIATES, INC. AND M.E. SACK ENGINEERING. IT MAY NOT BE COPIED, ALTERED, OR REPRODUCED IN ANY MANNER WITHOUT PERMISSION ON A SIGNED AND SEALED DOCUMENT. THE INFORMATION CONTAINED HEREIN IS INTENDED FOR THE NAMED CLIENT ONLY. IN THE EVENT OF AN ELECTRONIC VERSION P.C. SIMONTON & ASSOC., INC. AND M.E. SACK ENGINEERING ASSUMES NO RESPONSIBILITY FOR DATA GENERATED, ALTERED OR STAKED FROM THIS DRAWING. IN THE EVENT OF A DISPUTE, HARD COPIES WILL TAKE PRECEDENCE OVER ANY ELECTRONIC MEDIA.

DESIGN PROFESSIONAL
 MARCUS E. SACK

515 NORTH MAIN STREET
 P.O. BOX 649
 HINESVILLE, GA 31313
 TEL: (912) 368-5212

MUNICIPALITY:
 CITY OF FLEMINGTON

COUNTY:
 LIBERTY COUNTY

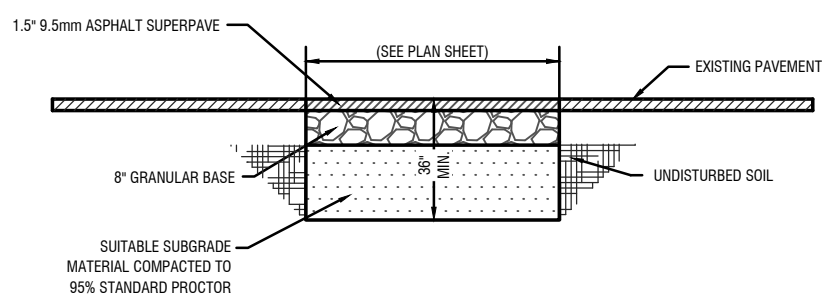
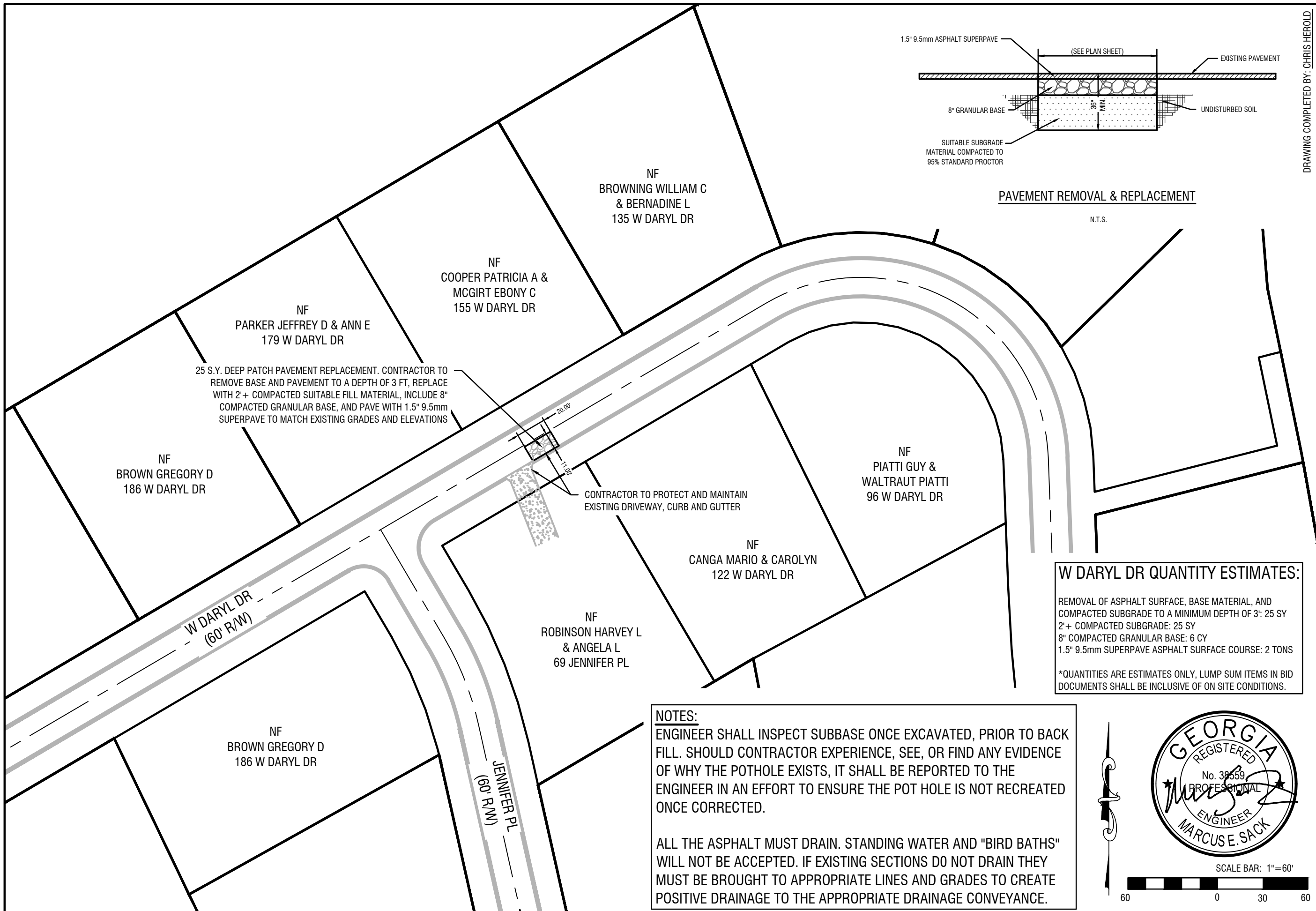
OWNER:
 CITY OF FLEMINGTON - MAYOR TIMOTHY BYLER
 156 OLD SUNBURY ROAD
 FLEMINGTON, GA 31313
 PHONE: (912) 876-3223

JOB NO.: 2025-10 PRJ

CITY OF FLEMINGTON LMIG
 PATRIOT TRAIL MILL & OVERLAY EXHIBIT

C1

PLOT DATE: March 30, 2026



PAVEMENT REMOVAL & REPLACEMENT

N.T.S.

25 S.Y. DEEP PATCH PAVEMENT REPLACEMENT. CONTRACTOR TO REMOVE BASE AND PAVEMENT TO A DEPTH OF 3 FT, REPLACE WITH 2'+ COMPACTED SUITABLE FILL MATERIAL, INCLUDE 8" COMPACTED GRANULAR BASE, AND PAVE WITH 1.5" 9.5mm SUPERPAVE TO MATCH EXISTING GRADES AND ELEVATIONS

CONTRACTOR TO PROTECT AND MAINTAIN EXISTING DRIVEWAY, CURB AND GUTTER

W DARYL DR QUANTITY ESTIMATES:

REMOVAL OF ASPHALT SURFACE, BASE MATERIAL, AND COMPACTED SUBGRADE TO A MINIMUM DEPTH OF 3': 25 SY
 2'+ COMPACTED SUBGRADE: 25 SY
 8" COMPACTED GRANULAR BASE: 6 CY
 1.5" 9.5mm SUPERPAVE ASPHALT SURFACE COURSE: 2 TONS

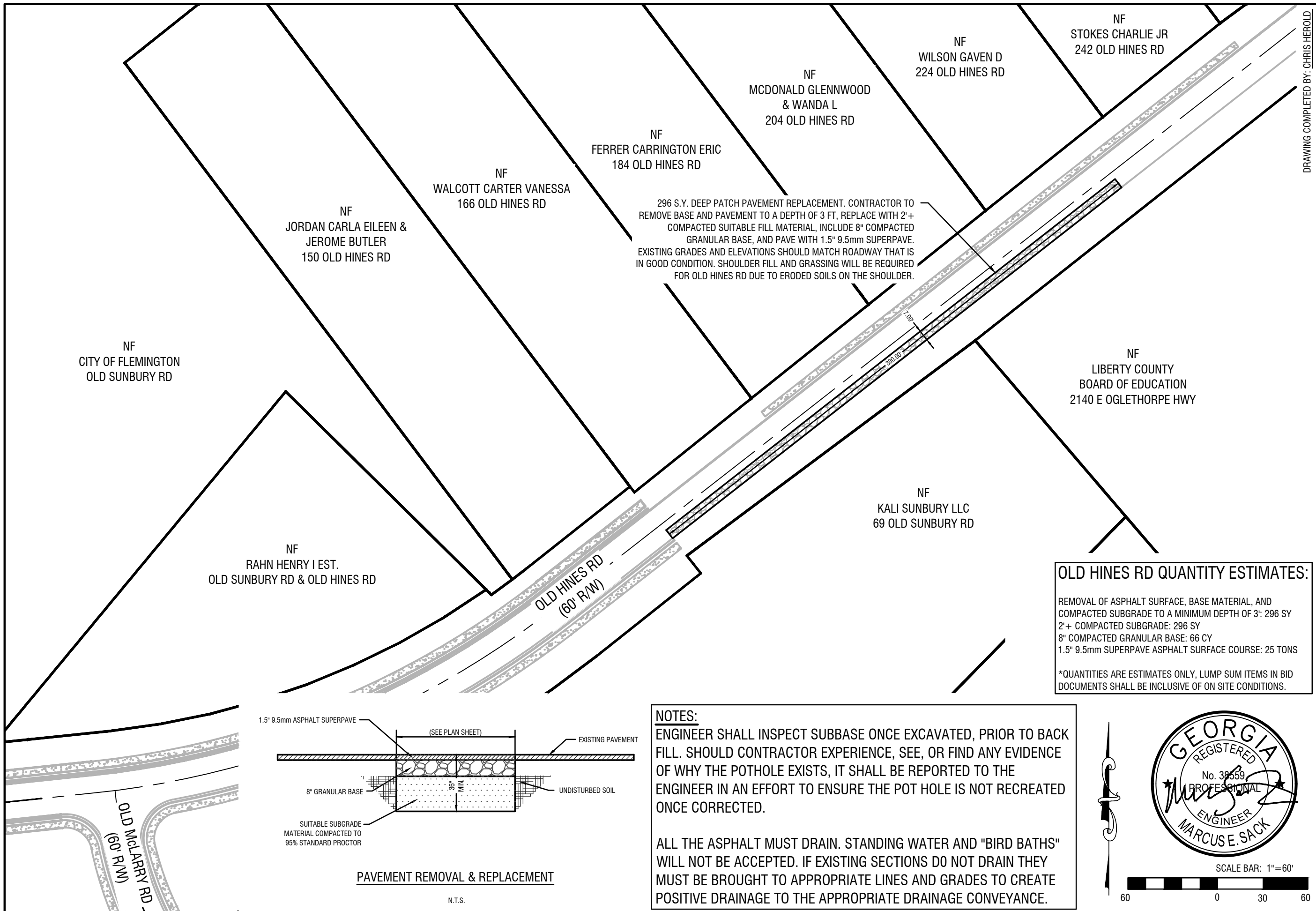
*QUANTITIES ARE ESTIMATES ONLY, LUMP SUM ITEMS IN BID DOCUMENTS SHALL BE INCLUSIVE OF ON SITE CONDITIONS.

NOTES:
 ENGINEER SHALL INSPECT SUBBASE ONCE EXCAVATED, PRIOR TO BACK FILL. SHOULD CONTRACTOR EXPERIENCE, SEE, OR FIND ANY EVIDENCE OF WHY THE POT HOLE EXISTS, IT SHALL BE REPORTED TO THE ENGINEER IN AN EFFORT TO ENSURE THE POT HOLE IS NOT RECREATED ONCE CORRECTED.

ALL THE ASPHALT MUST DRAIN. STANDING WATER AND "BIRD BATHS" WILL NOT BE ACCEPTED. IF EXISTING SECTIONS DO NOT DRAIN THEY MUST BE BROUGHT TO APPROPRIATE LINES AND GRADES TO CREATE POSITIVE DRAINAGE TO THE APPROPRIATE DRAINAGE CONVEYANCE.

DRAWING COMPLETED BY: CHRIS HEROLD

REVISIONS:
ADDENDUM 2
ADDENDUM 3
THIS DRAWING IS AN INSTRUMENT OF SERVICE AND REMAINS THE PROPERTY OF P.C. SIMONTON & ASSOCIATES, INC. AND M.E. SACK ENGINEERING. IT MAY NOT BE COPIED, ALTERED, OR REPRODUCED IN ANY MANNER WITHOUT PERMISSION ON A SIGNED AND SEALED DOCUMENT. THE INFORMATION CONTAINED HEREIN IS INTENDED FOR THE NAMED CLIENT ONLY. IN THE EVENT OF AN ELECTRONIC VERSION P.C. SIMONTON & ASSOC., INC. AND M.E. SACK ENGINEERING ASSUMES NO RESPONSIBILITY FOR DATA GENERATED, ALTERED OR STAKED FROM THIS DRAWING. IN THE EVENT OF A DISPUTE, HARD COPIES WILL TAKE PRECEDENCE OVER ANY ELECTRONIC MEDIA.*
DESIGN PROFESSIONAL MARCUS E. SACK
515 NORTH MAIN STREET P.O. BOX 649 HINESVILLE, GA 31313 TEL: (912) 368-5212
MUNICIPALITY: CITY OF FLEMINGTON
COUNTY: LIBERTY COUNTY
OWNER: CITY OF FLEMINGTON - MAYOR TIMOTHY BYLER 156 OLD SUNBURY ROAD FLEMINGTON, GA 31313 PHONE:(912) 876-3223
JOB NO.: 2025-10 PRJ
CITY OF FLEMINGTON LMIG W DARYL DRIVE PAVEMENT PATCHING
C3
PLOT DATE: March 30, 2026



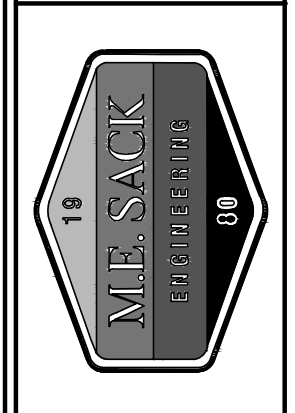
DRAWING COMPLETED BY: CHRIS HEROLD

REVISIONS:
ADDENDUM 2
ADDENDUM 3

THIS DRAWING IS AN INSTRUMENT OF SERVICE AND REMAINS THE PROPERTY OF P.C. SIMONTON & ASSOCIATES, INC. AND M.E. SACK ENGINEERING. IT MAY NOT BE COPIED, ALTERED, OR REPRODUCED IN ANY MANNER WITHOUT PERMISSION ON A SIGNED AND SEALED DOCUMENT. THE INFORMATION CONTAINED HEREIN IS INTENDED FOR THE NAMED CLIENT ONLY. IN THE EVENT OF AN ELECTRONIC VERSION P.C. SIMONTON & ASSOC., INC. AND M.E. SACK ENGINEERING ASSUMES NO RESPONSIBILITY FOR DATA GENERATED, ALTERED OR STAKED FROM THIS DRAWING. IN THE EVENT OF A DISPUTE, HARD COPIES WILL TAKE PRECEDENCE OVER ANY ELECTRONIC MEDIA.

DESIGN PROFESSIONAL
MARCUS E. SACK

515 NORTH MAIN STREET
P.O. BOX 649
HINESVILLE, GA 31313
TEL: (912) 368-5212



MUNICIPALITY:
CITY OF FLEMINGTON

COUNTY:
LIBERTY COUNTY

OWNER:
CITY OF FLEMINGTON -
MAYOR TIMOTHY BYLER
156 OLD SUNBURY ROAD
FLEMINGTON, GA 31313
PHONE: (912) 876-3223

JOB NO.: 2025-10 PRJ

CITY OF
FLEMINGTON LMIG
OLD HINES ROAD
PAVEMENT PATCHING

C4

PLOT DATE: March 30, 2026

296 S.Y. DEEP PATCH PAVEMENT REPLACEMENT. CONTRACTOR TO REMOVE BASE AND PAVEMENT TO A DEPTH OF 3 FT, REPLACE WITH 2'+ COMPACTED SUITABLE FILL MATERIAL, INCLUDE 8" COMPACTED GRANULAR BASE, AND PAVE WITH 1.5" 9.5mm SUPERPAVE. EXISTING GRADES AND ELEVATIONS SHOULD MATCH ROADWAY THAT IS IN GOOD CONDITION. SHOULDER FILL AND GRASSING WILL BE REQUIRED FOR OLD HINES RD DUE TO ERODED SOILS ON THE SHOULDER.

OLD HINES RD QUANTITY ESTIMATES:

REMOVAL OF ASPHALT SURFACE, BASE MATERIAL, AND COMPACTED SUBGRADE TO A MINIMUM DEPTH OF 3': 296 SY
 2'+ COMPACTED SUBGRADE: 296 SY
 8" COMPACTED GRANULAR BASE: 66 CY
 1.5" 9.5mm SUPERPAVE ASPHALT SURFACE COURSE: 25 TONS

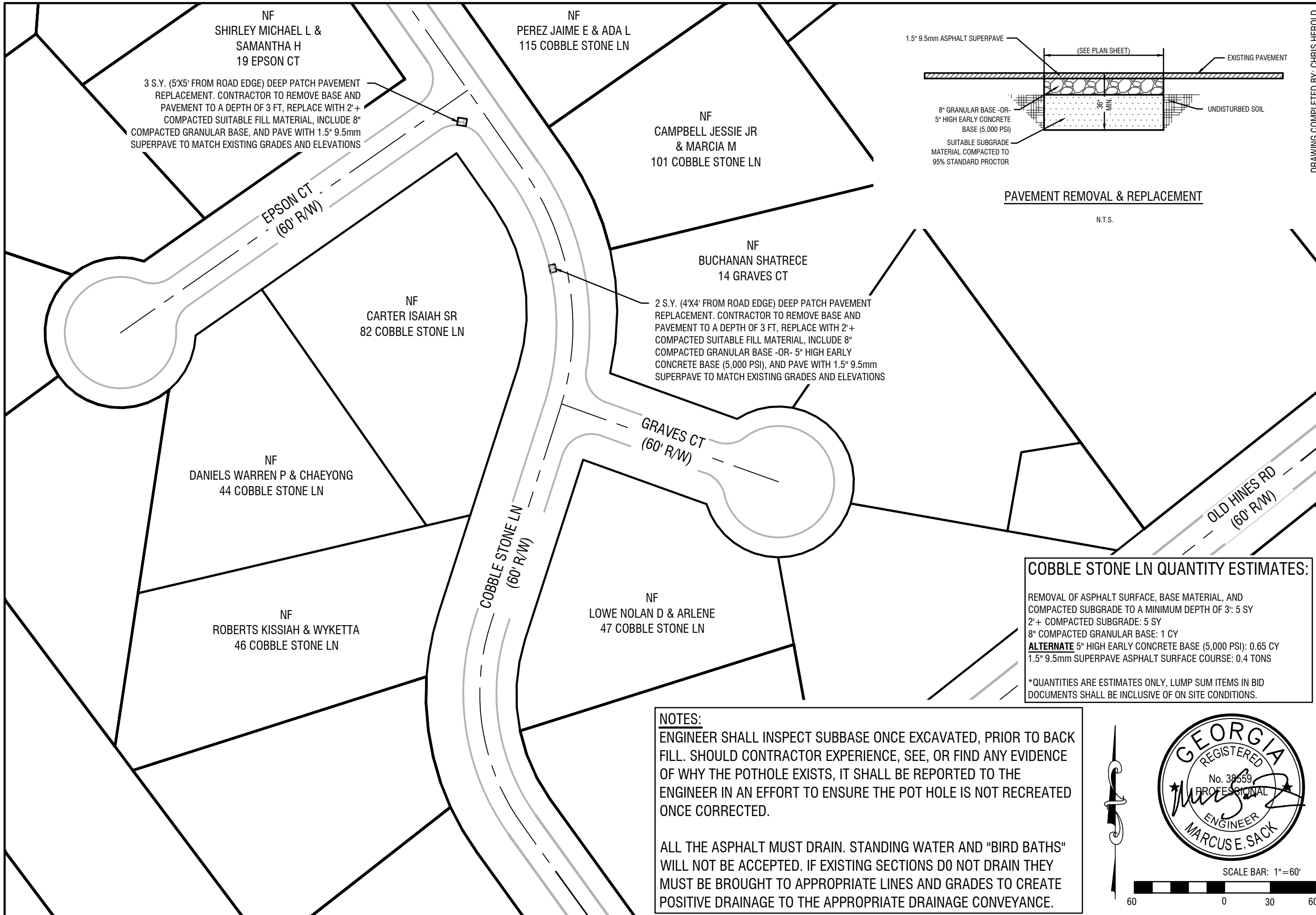
*QUANTITIES ARE ESTIMATES ONLY, LUMP SUM ITEMS IN BID DOCUMENTS SHALL BE INCLUSIVE OF ON SITE CONDITIONS.

NOTES:
ENGINEER SHALL INSPECT SUBBASE ONCE EXCAVATED, PRIOR TO BACK FILL. SHOULD CONTRACTOR EXPERIENCE, SEE, OR FIND ANY EVIDENCE OF WHY THE POT HOLE EXISTS, IT SHALL BE REPORTED TO THE ENGINEER IN AN EFFORT TO ENSURE THE POT HOLE IS NOT RECREATED ONCE CORRECTED.

ALL THE ASPHALT MUST DRAIN. STANDING WATER AND "BIRD BATHS" WILL NOT BE ACCEPTED. IF EXISTING SECTIONS DO NOT DRAIN THEY MUST BE BROUGHT TO APPROPRIATE LINES AND GRADES TO CREATE POSITIVE DRAINAGE TO THE APPROPRIATE DRAINAGE CONVEYANCE.

PAVEMENT REMOVAL & REPLACEMENT

N.T.S.



DRAWING COMPLETED BY: CHRIS HEROLD

REVISIONS:
ADDENDUM 2
ADDENDUM 3

THIS DRAWING IS AN INSTRUMENT OF SERVICE AND REMAINS THE PROPERTY OF P.C. SIMONTON & ASSOCIATES, INC. AND M.E. SACK ENGINEERING. IT MAY NOT BE COPIED, ALTERED, OR REPRODUCED IN ANY MANNER WITHOUT PERMISSION ON A SIGNED AND SEALED DOCUMENT. THE INFORMATION CONTAINED HEREIN IS INTENDED FOR THE NAMED CLIENT ONLY. IN THE EVENT OF AN ELECTRONIC VERSION P.C. SIMONTON & ASSOC., INC. AND M.E. SACK ENGINEERING ASSUMES NO RESPONSIBILITY FOR DATA GENERATED, ALTERED OR STAKED FROM THIS DRAWING. IN THE EVENT OF A DISPUTE, HARD COPIES WILL TAKE PRECEDENCE OVER ANY ELECTRONIC MEDIA.

DESIGN PROFESSIONAL
MARCUS E. SACK

515 NORTH MAIN STREET
P.O. BOX 649
HINESVILLE, GA 31313
TEL: (912) 368-5212



MUNICIPALITY:
CITY OF FLEMINGTON

COUNTY:
LIBERTY COUNTY

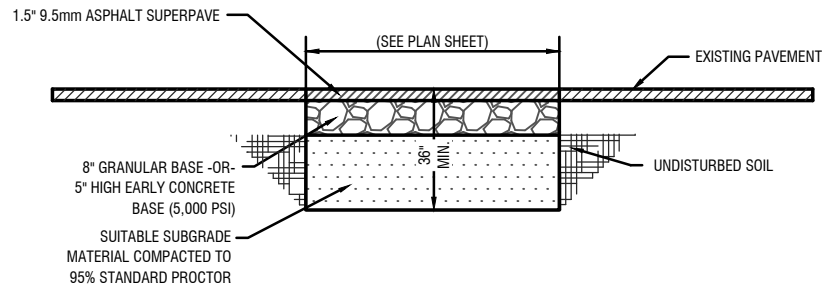
OWNER:
CITY OF FLEMINGTON -
MAYOR TIMOTHY BYLER
156 OLD SUNBURY ROAD
FLEMINGTON, GA 31313
PHONE: (912) 876-3223

JOB NO.: 2025-10 PRJ

CITY OF
FLEMINGTON LMIG
COBBLE STONE LANE
PAVEMENT PATCHING

C5

PLOT DATE: March 30, 2026



PAVEMENT REMOVAL & REPLACEMENT

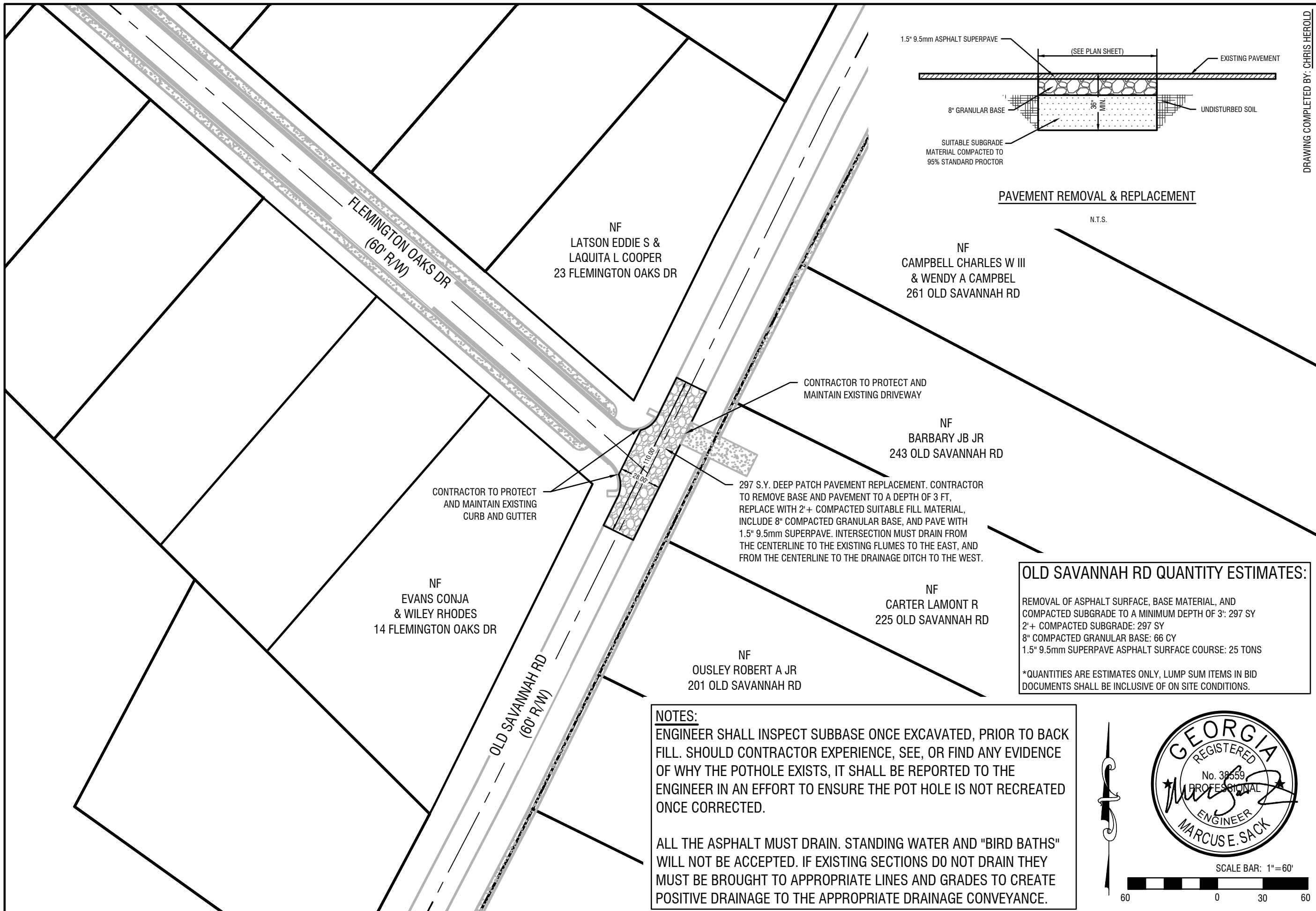
COBBLE STONE LN QUANTITY ESTIMATES:

REMOVAL OF ASPHALT SURFACE, BASE MATERIAL, AND COMPACTED SUBGRADE TO A MINIMUM DEPTH OF 3": 5 SY
 2"+ COMPACTED SUBGRADE: 5 SY
 8" COMPACTED GRANULAR BASE: 1 CY
ALTERNATE 5" HIGH EARLY CONCRETE BASE (5,000 PSI): 0.65 CY
 1.5" 9.5mm SUPERPAVE ASPHALT SURFACE COURSE: 0.4 TONS

*QUANTITIES ARE ESTIMATES ONLY, LUMP SUM ITEMS IN BID DOCUMENTS SHALL BE INCLUSIVE OF ON SITE CONDITIONS.

NOTES:
ENGINEER SHALL INSPECT SUBBASE ONCE EXCAVATED, PRIOR TO BACK FILL. SHOULD CONTRACTOR EXPERIENCE, SEE, OR FIND ANY EVIDENCE OF WHY THE POT HOLE EXISTS, IT SHALL BE REPORTED TO THE ENGINEER IN AN EFFORT TO ENSURE THE POT HOLE IS NOT RECREATED ONCE CORRECTED.

ALL THE ASPHALT MUST DRAIN. STANDING WATER AND "BIRD BATHS" WILL NOT BE ACCEPTED. IF EXISTING SECTIONS DO NOT DRAIN THEY MUST BE BROUGHT TO APPROPRIATE LINES AND GRADES TO CREATE POSITIVE DRAINAGE TO THE APPROPRIATE DRAINAGE CONVEYANCE.



DRAWING COMPLETED BY: CHRIS HEROLD

REVISIONS:
ADDENDUM 2
ADDENDUM 3

THIS DRAWING IS AN INSTRUMENT OF SERVICE AND REMAINS THE PROPERTY OF P.C. SIMONTON & ASSOCIATES, INC. AND M.E. SACK ENGINEERING. IT MAY NOT BE COPIED, ALTERED, OR REPRODUCED IN ANY MANNER WITHOUT PERMISSION ON A SIGNED AND SEALED DOCUMENT. THE INFORMATION CONTAINED HEREIN IS INTENDED FOR THE NAMED CLIENT ONLY. IN THE EVENT OF AN ELECTRONIC VERSION P.C. SIMONTON & ASSOC., INC. AND M.E. SACK ENGINEERING ASSUMES NO RESPONSIBILITY FOR DATA GENERATED, ALTERED OR STAKED FROM THIS DRAWING. IN THE EVENT OF A DISPUTE, HARD COPIES WILL TAKE PRECEDENCE OVER ANY ELECTRONIC MEDIA.

DESIGN PROFESSIONAL
 MARCUS E. SACK

515 NORTH MAIN STREET
 P.O. BOX 649
 HINESVILLE, GA 31313
 TEL: (912) 368-5212



MUNICIPALITY:
 CITY OF FLEMINGTON

COUNTY:
 LIBERTY COUNTY

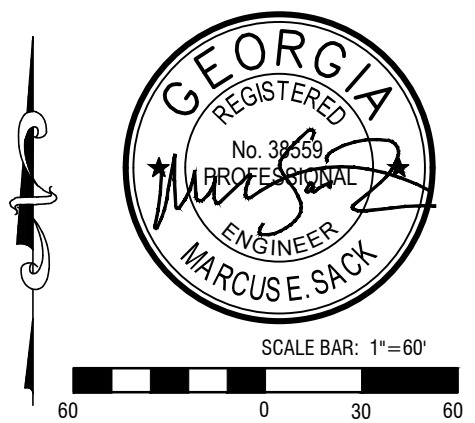
OWNER:
 CITY OF FLEMINGTON - MAYOR TIMOTHY BYLER
 156 OLD SUNBURY ROAD
 FLEMINGTON, GA 31313
 PHONE: (912) 876-3223

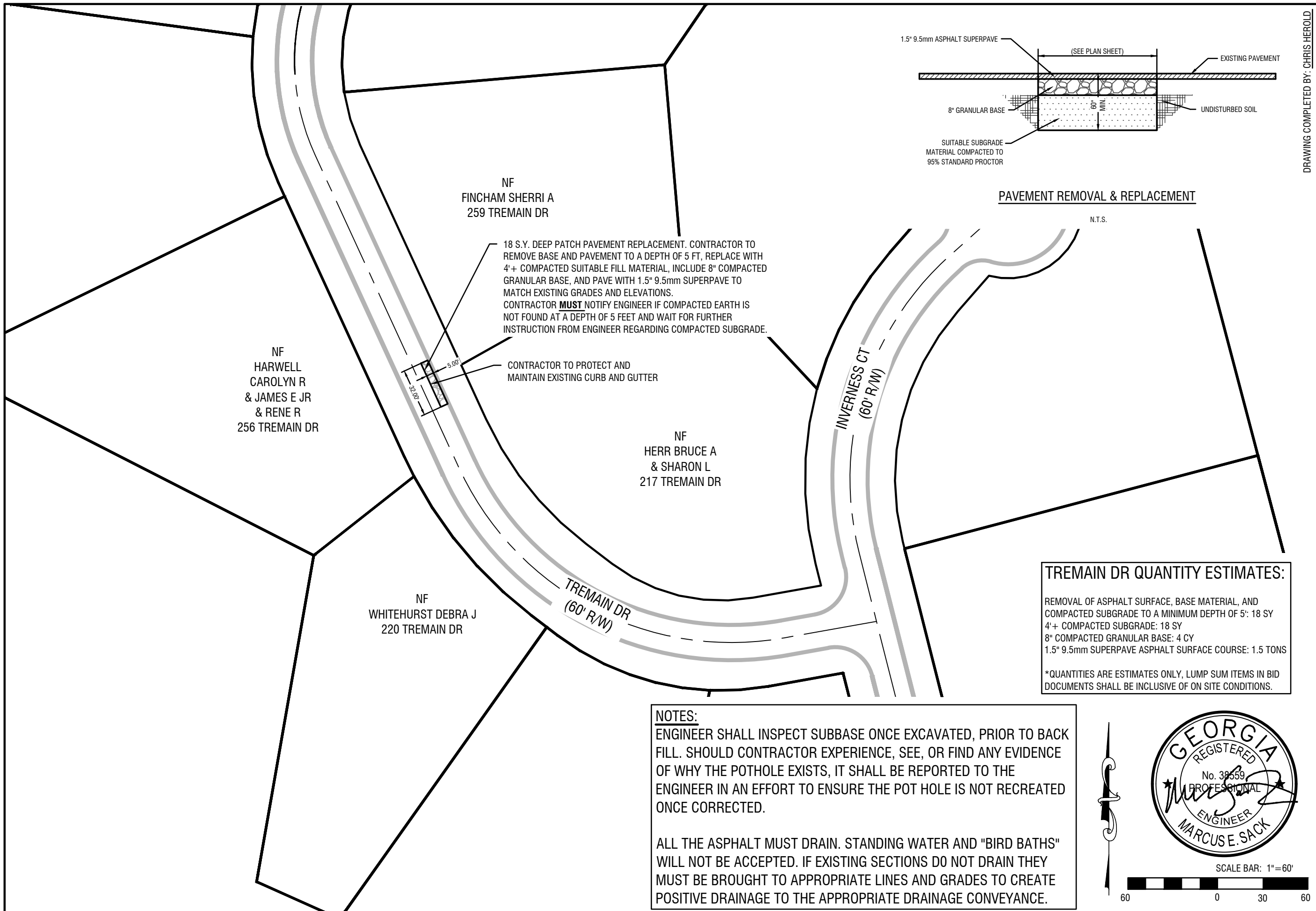
JOB NO.: 2025-10 PRJ

CITY OF
 FLEMINGTON LMIG
 OLD SAVANNAH ROAD
 PAVEMENT PATCHING

C6

PLOT DATE: March 30, 2026





DRAWING COMPLETED BY: CHRIS HEROLD

REVISIONS:
ADDENDUM 2
ADDENDUM 3

THIS DRAWING IS AN INSTRUMENT OF SERVICE AND REMAINS THE PROPERTY OF P.C. SIMONTON & ASSOCIATES, INC. AND M.E. SACK ENGINEERING. IT MAY NOT BE COPIED, ALTERED, OR REPRODUCED IN ANY MANNER WITHOUT PERMISSION ON A SIGNED AND SEALED DOCUMENT. THE INFORMATION CONTAINED HEREIN IS INTENDED FOR THE NAMED CLIENT ONLY. IN THE EVENT OF AN ELECTRONIC VERSION P.C. SIMONTON & ASSOC., INC. AND M.E. SACK ENGINEERING ASSUMES NO RESPONSIBILITY FOR DATA GENERATED, ALTERED OR STAKED FROM THIS DRAWING. IN THE EVENT OF A DISPUTE, HARD COPIES WILL TAKE PRECEDENCE OVER ANY ELECTRONIC MEDIA.

DESIGN PROFESSIONAL
MARCUS E. SACK

515 NORTH MAIN STREET
P.O. BOX 649
HINESVILLE, GA 31313
TEL: (912) 368-5212



MUNICIPALITY:
CITY OF FLEMINGTON

COUNTY:
LIBERTY COUNTY

OWNER:
CITY OF FLEMINGTON -
MAYOR TIMOTHY BYLER
156 OLD SUNBURY ROAD
FLEMINGTON, GA 31313
PHONE: (912) 876-3223

JOB NO.: 2025-10 PRJ

TREMAIN DR QUANTITY ESTIMATES:

REMOVAL OF ASPHALT SURFACE, BASE MATERIAL, AND COMPACTED SUBGRADE TO A MINIMUM DEPTH OF 5": 18 SY
 4"+ COMPACTED SUBGRADE: 18 SY
 8" COMPACTED GRANULAR BASE: 4 CY
 1.5" 9.5mm SUPERPAVE ASPHALT SURFACE COURSE: 1.5 TONS

*QUANTITIES ARE ESTIMATES ONLY, LUMP SUM ITEMS IN BID DOCUMENTS SHALL BE INCLUSIVE OF ON SITE CONDITIONS.

NOTES:
ENGINEER SHALL INSPECT SUBBASE ONCE EXCAVATED, PRIOR TO BACK FILL. SHOULD CONTRACTOR EXPERIENCE, SEE, OR FIND ANY EVIDENCE OF WHY THE POT HOLE EXISTS, IT SHALL BE REPORTED TO THE ENGINEER IN AN EFFORT TO ENSURE THE POT HOLE IS NOT RECREATED ONCE CORRECTED.

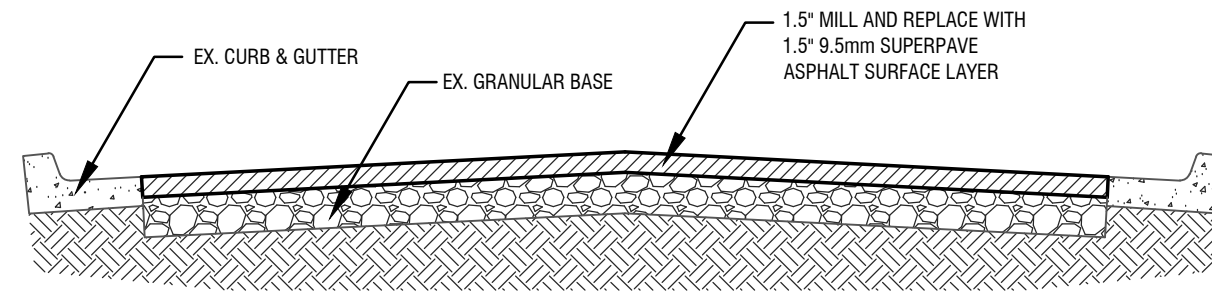
ALL THE ASPHALT MUST DRAIN. STANDING WATER AND "BIRD BATHS" WILL NOT BE ACCEPTED. IF EXISTING SECTIONS DO NOT DRAIN THEY MUST BE BROUGHT TO APPROPRIATE LINES AND GRADES TO CREATE POSITIVE DRAINAGE TO THE APPROPRIATE DRAINAGE CONVEYANCE.

CITY OF
FLEMINGTON LMIG

TREMAIN DRIVE
PAVEMENT PATCHING

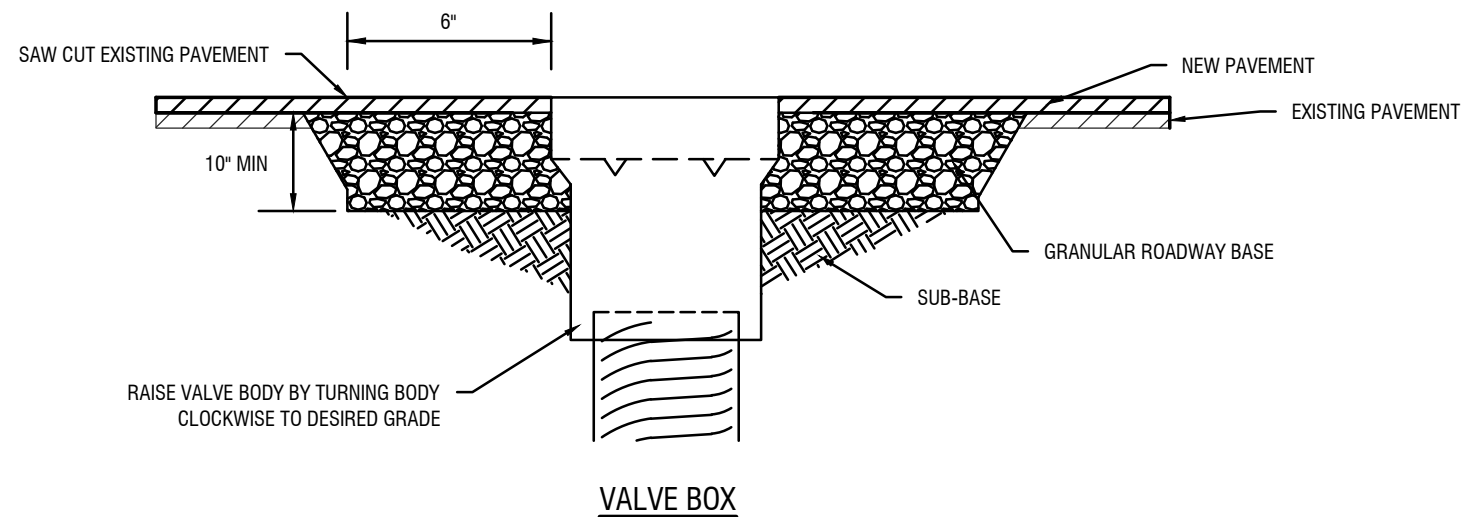
C7

PLOT DATE: March 30, 2026



ASPHALT PAVEMENT OVERLAY (CROWN W/C&G)

N.T.S.



VALVE BOX

NOTE:

1. STRUCTURES SHALL NOT BE ADJUSTED FOR A PERIOD OF 24 HOURS AFTER RESURFACING IS COMPLETED IN THAT AREA
2. ASPHALT SHALL BE SAWCUT TO MAKE A SMOOTH, EVEN EDGE.
3. STRUCTURE SHALL BE ADJUSTED TO FIT FLUSH WITH STREET SURFACE.
4. USE AT LEAST 3/4" NON-SHRINK GROUT BETWEEN SPACERS AND MANHOLE FRAME.
5. CONTRACTOR SHALL TAKE ALL NECESSARY PRECAUTIONS TO ENSURE THAT MORTAR AND CONSTRUCTION MATERIAL DOES NOT DROP INTO MANHOLE OR SEWER LINES.
6. CONTRACTOR SHALL MAINTAIN TRAFFIC BARRIERS AND STEEL PLATES AROUND MANHOLE UNTIL CONCRETE CURES.
7. THE COMBINED HEIGHT OF STACKED GRADE RINGS SHALL BE A MAXIMUM OF 12 INCHES. ADJUSTMENTS EXCEEDING A HEIGHT OF 12 INCHES REQUIRE THE USE OF A MANHOLE RISER SECTION.

STRUCTURE ADJUSTMENT IN TRAFFIC AREAS

N.T.S.



DATE: 3/30/2026

DRAWING COMPLETED BY: CHRIS HEROLD

REVISIONS:
ADDENDUM 2
ADDENDUM 3

DESIGN PROFESSIONAL
MARCUS E. SACK

515 NORTH MAIN STREET
P.O. BOX 649
HINESVILLE, GA 31313
TEL: (912) 368-5212



MUNICIPALITY:
CITY OF FLEMINGTON

COUNTY:
LIBERTY COUNTY

OWNER:
CITY OF FLEMINGTON -
MAYOR TIMOTHY BYLER
156 OLD SUNBURY ROAD
FLEMINGTON, GA 31313
PHONE: (912) 876-3223

JOB NO.: 2025-10 PRJ

CITY OF
FLEMINGTON LMIG
DETAILS

C8

PLOT DATE: March 30, 2026